

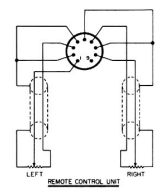
P851 SCHEMATIC AW# 1857A

RESISTORS	R1	R2	R3	R4	R5	R6	R7	R8	R9	R10	R11	R12	R13	R14	R15	R16	R17	R18	R19	R20	R21	R22	R23	R24	R25	R26	R27	R28	R29	R30	R31	R32																																																
CAPACITORS	C1	C2	C3	C4	C5	C6	C7	C8	C9	C10	C11	C12	C13	C14	C15	C16	C17	C18	C19	C20	C21	C22	C23	C24	C25	C26	C27	C28	C29	C30	C31	C32	C33	C34	C35	C36	C37	C38	C39	C40	C41	C42	C43	C44	C45	C46	C47	C48	C49	C50	C51	C52	C53	C54	C55	C56	C57	C58	C59	C60	C61	C62	C63	C64	C65	C66	C67	C68	C69	C70	C71	C72	C73	C74	C75	C76	C77	C78	C79	C80

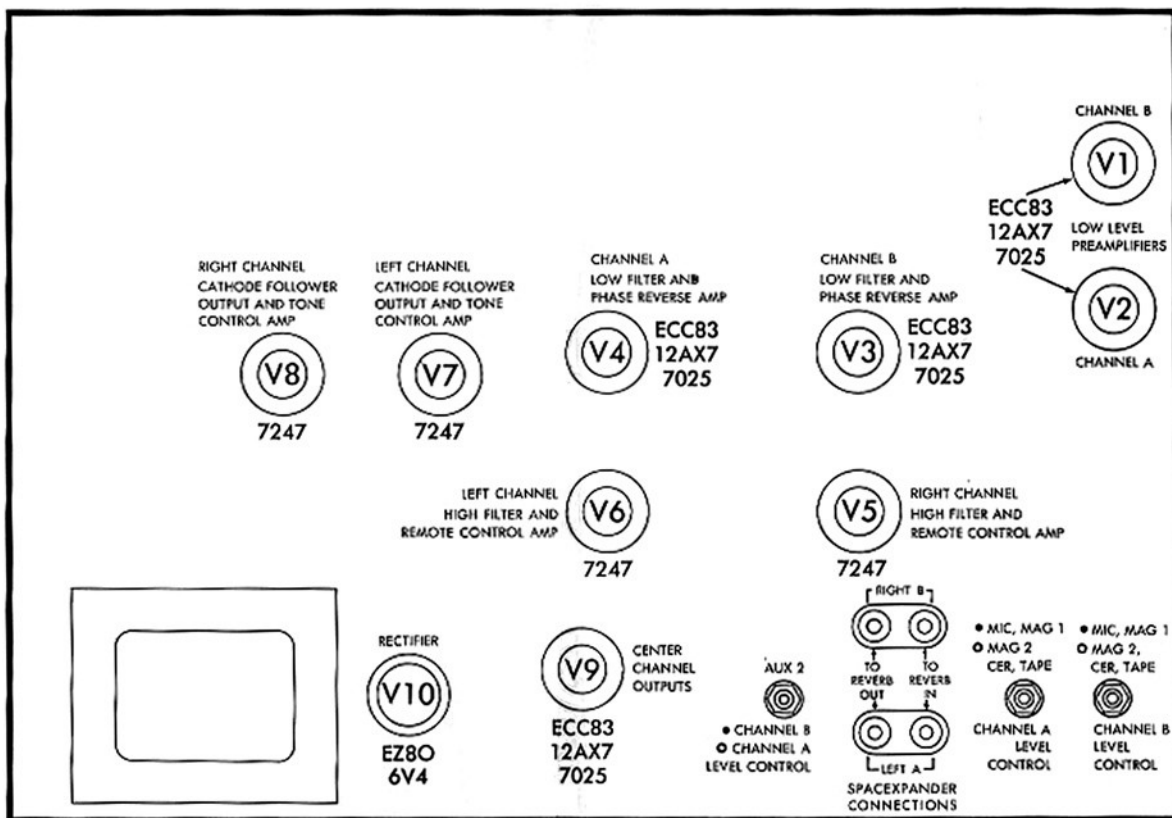
LOW LEVEL SWITCH POSITIONS
 SHOWN IN → MIC
 1/2
 7/8
 COL 1
 RAA 1
 RAA 2
 COL 2

MONO-STEREO SWITCH POSITIONS
 SHOWN IN → BALANCE RIGHT
 BALANCE LEFT
 REVERSE
 STEREO
 MONO-PHONO
 A
 B

NOTE
 ALL SLIDE SWITCHES SHOWN IN THE "OFF" POSITION



TUBE LAYOUT



AW1051A

PARTS DESCRIPTION LIST

CAPACITORS

10% tolerance for all fixed capacitors, unless otherwise noted or marked GMV (guaranteed minimum value).

Symbol	Description	Part No.
C1, 2	Ceramic, 100uf, N1500, 100V	C50070-6
C3, 4	Mylar, .022uf, 250V	C50197-49
C13, 14	Mylar, .047uf, 250V	C50197-52
C30, 31	Ceramic, 100uf, N1500, 1000V	C50070-6
C32	Electrolytic, 2 section A — 1000uf, 35V B — 1000uf, 35V	C50180-29
C33	Electrolytic, 4 section A — 40uf, 450V B — 10uf, 450V C — 10uf, 450V D — 40uf, 450V	C50180-10
C34	Electrolytic, 4 section A — 30uf, 350V B — 10uf, 250V C — 30uf, 350V D — 10uf, 300V	C50180-30
C35, 36	Ceramic, .005uf, 20% , 500V	C50089-1
C37, 38	Ceramic, .0039uf, 1000V	C50072-34
C41, 42	Mylar, .1uf, 250V	C50197-54
C43, 44,	Electrolytic, 50uf, 3V	C50283-1
45, 46	Mylar, .1uf, 250V	C50197-54
C47, 48	Ceramic, 33uf, 5% , N150, 1000V	C50070-25
C49, 50	Ceramic, 24uf, 5% , N150, 1000V	C50070-8
C51, 52	Mylar, .033uf, 250V	C50197-51
C53, 54	Ceramic, 2700uf, 1000V	C50072-17
C55, 56	Electrolytic, 50uf, 3V	C50283-1
C37, 58	Ceramic, 300uf, 1000V	C50072-39
C59, 60	Ceramic, 1000uf, 1000V	C50072-3
C63, 64	Ceramic, 220uf, 1000V	C50072-20
C65, 66	Mylar, .68uf, 250V	C50197-57
C67, 68	Ceramic, 220uf, 1000V	C50072-20
C69, 70	Mylar, .047uf, 250V	C50197-52
C71, 72	Mylar, .68uf, 250V	C50197-57
C73, 74	Electrolytic, 50uf, 3V	C50283-1
C75, 76,	Mylar, .68uf, 250V	C50197-57
77, 78		
C79, 80		

RESISTORS AND POTENTIOMETERS

In ohms, 10% tolerance, 1/2 watt, unless otherwise noted. K=Kilohm, M=Megohm.

Symbol	Description	Part No.
R3, 4, 5, 6	Dep. Carbon, 100K, 5% , 1/2 W	R33DC104J
R7, 8,		
9, 10	Dep. Carbon, 120K, 5% , 1/2 W	R33DC124J
R11	Potentiometer, Dual, 250K, aux. 2 level	R50160-71
R12, 13	Dep. Carbon, 100K, 5% , 1/2 W	R33DC104J
R14, 15	Dep. Carbon, 10K, 5% , 1/2 W	R33DC103J
R16, 17	Glass, 2.7K, 5% , 1W	R30G272J
R18, 19	Glass, 330K, 5% , 1W	R30G334J
R20, 21	Dep. Carbon, 4.7M, 5% , 1/2 W	R33DC475J
R26, 27	Dep. Carbon, 220K, 5% , 1/2 W	R33DC224J
R28, 29	Composition, 560K	RC20BF564K
R30	Dep. Carbon, 100K, 5% , 1/2 W	R33DC104J
R32, 33	Potentiometer, Dual, 250K, Mag. 1 & Mag. 2 level	R50160-71
R39	Dep. Carbon, 100K, 5% , 1/2 W	R33DC104J
R50, 51	Dep. Carbon, 120K, 5% , 1/2 W	R33DC124J
R52	Glass, 330, 3W	RPG3W331K
R53	Wirewound, 10K, 7W	R851-128
R54	Glass, 1K, 3W	RPG3W102K
R55	Composition, 47K	RC20BF473K
R56	Glass, 1K, 3W	RPG3W102K
R57, 58	Composition, 1.5M	RC30BF155K
R59	Glass, 5.6K, 3W	RPG3W562K
R60	Glass, 1K, 3W	RPG3W102K

R61, 62	Dep. Carbon, 220K, 5% , 1/2 W	R33DC224J
R63	Glass, 4.7K, 3W	RPG3W472K
R64, 65	Composition, 300K, 5% , 1/2 W	RC20BF304J
R66, 67	Dep. Carbon, 100K, 5% , 1/2 W	R33DC104J
R68	Composition, 15K	RC20BF153K
R69, 70	Composition, 1.5K	RC20BF152K
R71, 72	Composition, 330K	RC20BF334K
R73	Dep. Carbon, 4.7M, 5% , 1/2 W	R33DC475J
R75, 76	Dep. Carbon, 220K, 5% , 1/2 W	R33DC224J
R77, 78	Dep. Carbon, 2.7K, 5% , 1/2 W	R33DC272J
R79, 80	Dep. Carbon, 100K, 5% , 1/2 W	R33DC104J
R81, 82	Dep. Carbon, 470K, 5% , 1/2 W	R33DC474J
R83	Potentiometer, dual, 250K, balance	R50160-65
R84, 85,		
86, 87	Dep. Carbon, 470K, 5% , 1/2 W	R33DC474J
R88	Composition, 33	RC20BF330K
R89, 90	Composition, 2.7M, 5%	RC20BF275J
R91, 92	Composition, 2.2M, 5%	RC20BF225J
R93, 94	Dep. Carbon, 470K, 5% , 1/2 W	R33DC474J
R95	Potentiometer, dual, 1M, dimension	R50160-70
R96	Dep. Carbon, 470K, 5% , 1/2 W	R33DC474J
R97, 98	Dep. Carbon, 120K, 5% , 1/2 W	R33DC124J
R99, 100	Composition, 1.8K	RC20BF182K
R101, 102,		
103, 104,		
105, 106	Dep. Carbon, 47K, 5% , 1/2 W	R33DC473K
R107, 108	Composition, 68K, 10% , 1W	R30BF683K
R109, 110	Dep. Carbon, 470K, 5% , 1/2 W	R33DC474J
R111, 112	Dep. Carbon, 10K, 5% , 1/2 W	R33DC103J
R113	Dep. Carbon, 220K, 5% , 1/2 W	R33DC224J
R114, 115	Dep. Carbon, 220K, 5% , 1/2 W	R33DC224J
R116, 117	Dep. Carbon, 2.7K, 5% , 1/2 W	R33DC272J
R118, 119	Dep. Carbon, 22K, 5% , 1/2 W	R33DC223J
R120	Potentiometer, dual, 100K, volume	R50160-69
R121	Dep. Carbon, 470K, 5% , 1/2 W	R33DC474J
R122	Potentiometer, dual, 1M, bass	R50160-66
R123	Potentiometer, dual, 500K, treble	R50160-67
R124	Potentiometer, 500K, center volume	R50160-68
R125, 126	Dep. Carbon, 270K, 5% , 1/2 W	R33DC274J
R127, 128	Composition, 1.5K	RC20BF152K
R129, 130	Composition, 180K	RC20BF184K
R131, 132	Composition, 68K, 1W	R30BF683K

MISCELLANEOUS

Symbol	Description	Part No.
F1	Fuse, .5 amp., slo-blo	F795-136
I1, 2, 3,		
4, 5	Lamp, #47	I50009-1
PC1, 2	Printed Circuit, 3 1/2", tape EQ.	PC50187-7
PC3, 4	Printed Circuit, COL, EQ.	PC50187-6
PC5, 6	Printed Circuit, 78, EQ.	PC50187-8
PC7, 8	Printed Circuit, R1AA, 7 1/2", EQ.	PC50187-3
PC9, 10	Printed Circuit, tone control	PC657-140
P1	Plug, dummy	P50181
S1	Switch, low level	S851-126
S2	Switch, mono-stereo	S851-127
S3	Switch, push button	S851-119
S4	Switch, center ch., power	Part of R124
S5, 6, 7,		
8, 9	Switch, slide	S50200-5
S10	Switch, power	Part of R120
SR1, 2	Diode, silicon, SD91	SR851-121
T1	Transformer, power	T851-115
—	Dress panel	AS851-106
—	Shielded cable	AS50004-1
—	Knob, push button	E851-116
—	Knob, dual, front	E50323
—	Knob, dual, rear	E50221
—	Knob	E50325-1
—	Jewel, red	I50162-1
—	Jewel, yellow	I50162-2
—	Jewel, green	I50162-4